

DOT PEEN MARKING MACHINE

e10 c303



+ SPEED AND PRECISION

- Up to 3000 parts per day
- Axis accuracy (0,02 mm)

+ ERGONOMICS AND COMFORT

- Built-in counter for memorizing positions
- LED lighting for visual comfort

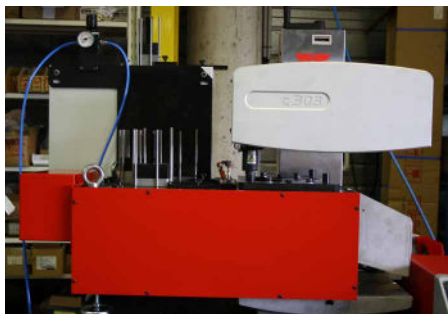
+ VERY LARGE MARKING WINDOW

- 300 x 150 mm - 11.8 x 5.9 in

+ SIMPLE AND REDUCED COST OF USE

- Easy programming
- No maintenance

APPLICATIONS



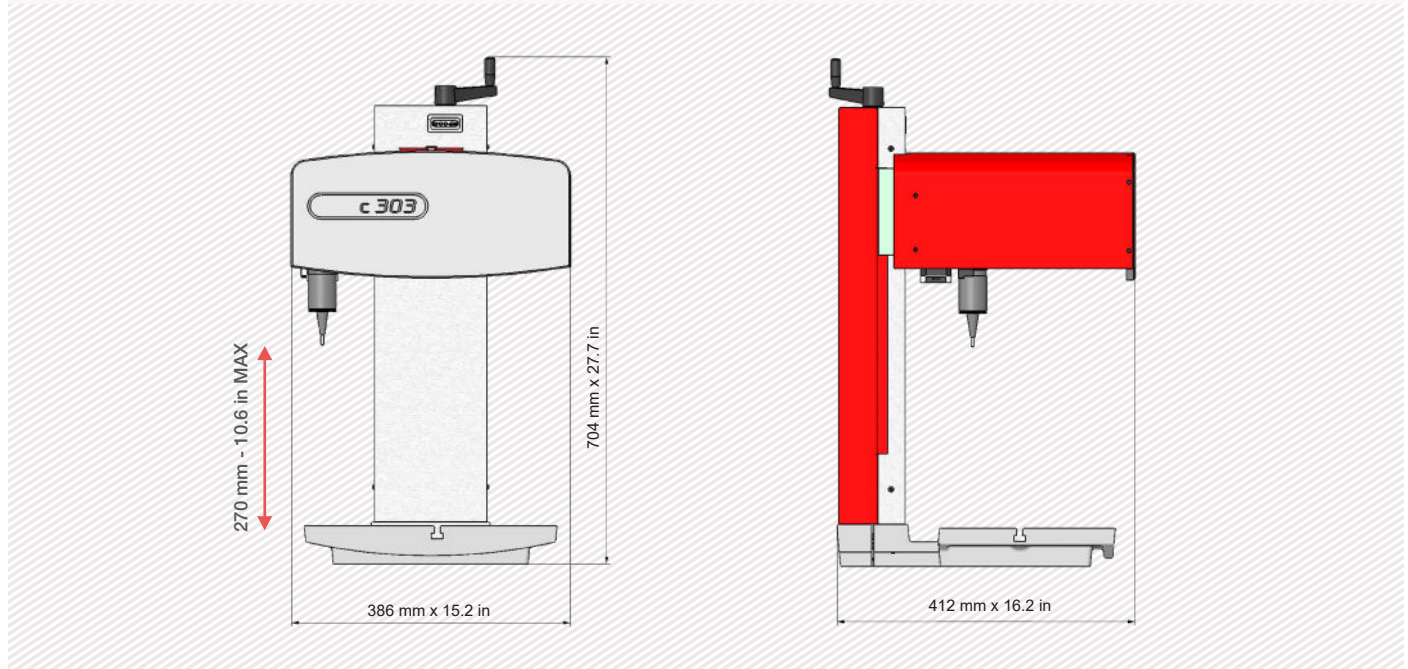
DOT PEEN MARKING EXAMPLES



TECHNICAL & MECHANICAL FEATURES

e10 c303

Marking window	300 x 150 mm - 11.8 x 5.9 in
External dimensions	386 x 412 x 704 mm - 15.2 x 16.2 x 27.7 in
Weight	30 kg - 66 lbs
Stylus	Tungsten carbide 60 mm - 2.4 in
Machine / controller cable length	2,5 m - 6.5 ft



OPTIONS



Rotary axes

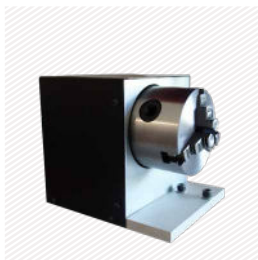


Plate support



Tag feeder



Datamatrix reader



Wireless barcode reader



Maintenance kit



Wide range of stylus



Starting cycle pedal

Please consult us if a specific configuration is not published in the table attached. SIC Marking designs customized and turnkey solutions for all industrial sectors. Our design offices produce machines in compliance with your specifications and your industrial standards.

E10 CONTROL UNIT

The e10 controller

- Color screen
- USB Port: to easily upload / download your marking files
- Fully programmable
- Standalone (no PC needed)
- Membrane protected industrial Keyboard
- IP40 waterproof box (no opening or fan)



+ Multiple connectivities






+ Color screen



+ USB Port

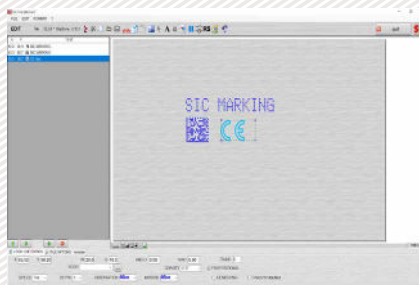


Technical & electronic features

e10 Controller		Communication	
Dimensions	322 x 380 x 112 mm - 13.7 x 15 x 4.4 in	Communication ports	RS232, RS422, USB, RS485 Profibus, TCP/IP, Ethernet/IP
Weight	5 kg - 11lbs	Inputs-outputs	8/8
LCD screen resolution	480 x 272 pixels	External keyboard input	USB
Keyboard	Qwerty integrated, protected by membrane	PC software	Creation of marking files, transfer controller / PC or USB key
Power	300 Watt	Optional communication cards:	
Power supply	Single phase, 85 to 260 VAC, 50 to 60 Hz	Ethernet TCP	
Controlled axes	2 (optional 3rd / 4th axis card)	PROFINET	
Operating temperature	From 5 to 40°C	PROFIBUS	

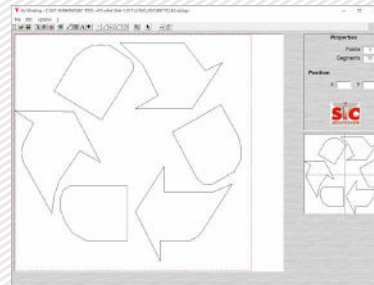
PC UTILITIES

File editor



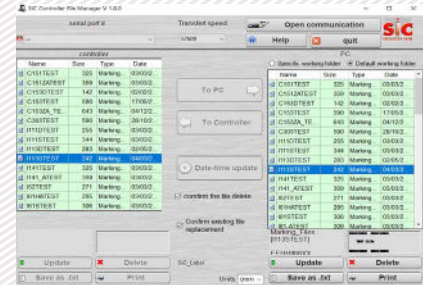
+ Creation or modification of files on PC.

Creation of logos



+ Creation of vector and matrix logos.

Creation of logos



+ Backup and file transfer utility.

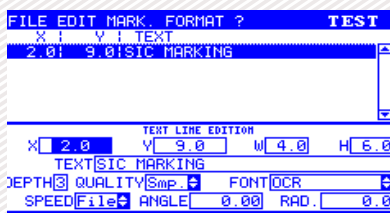
E10 RANGE SOFTWARE

Software features

Text function	Incrementation, date codes
Logos	Download from a PC or USB key
Datamatrix	Up to 348 characters, 48 x 48 dots
Fonts	Arial, Comic, Comic_B, Courier, OCR, OCR_BOLD, OCRA, 4x6
Style	Angular, Radial, Inverse, and Mirror
Character Size	From 0,1 mm to 99 mm (limited following marking window)
Depth	Up to 0,3 mm (according to the material)
Resolution Between Dots	0,05 mm MAX
Password	2 security levels
History function	Exportable Excel file
Help with maintenance	Auto diagnosis
Available languages	17



Graphic view



Edit menu

I/O SETTING		
Num	Input	Output
1	STOP	Cycle
2	START	Last
3	File Sel.	Error
4	File Sel.	Pause
5	File Sel.	Ready
6	None	NoPart
7	None	Part
8	None	Wear

CONTROLLER STATISTICS		
Moves	memory	
36 Cycles	35 Files	
117 Characters	26900 b. Used	
AXIS X 6 m	493134 b. Free	
AXIS Y 6 m	5.2% Used	
Impacts		
D1: 1012	D4: 1719	D7: 0
D2: 0	D5: 34	D8: 0
D3: 376	D6: 0	D9: 411

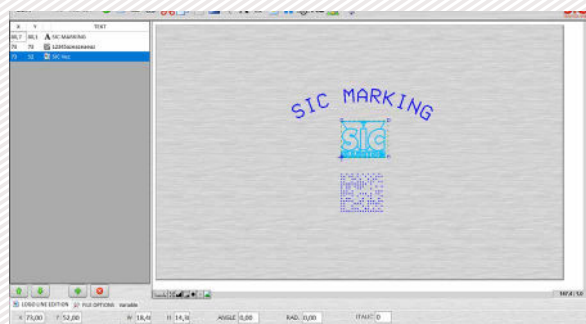
PC software for directly controlling the marking machine.

Available functions:

- Editing of marking files
- Input / output management
- History function and anti duplicates
- Datamatrix ECC200 and UID
- ...

OPTIONAL WINSIC SOFTWARE

WINSIC is a PC software for direct control of the marking machine.



+ Built-in logo design utility

+ Database Management (Excel, Access, txt)

+ Insertion of background images

